



BROUGHT TO YOU BY LEADING PAINT BRANDS

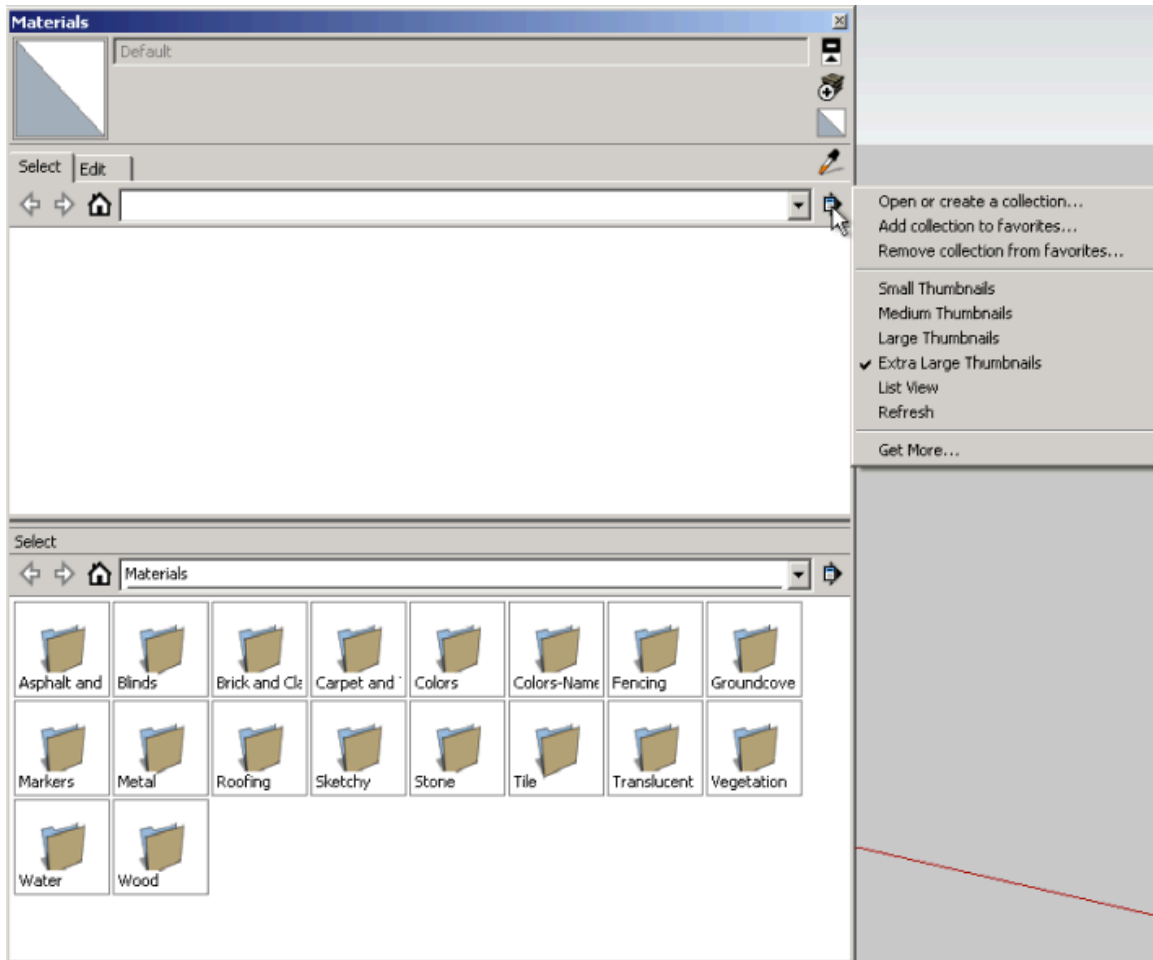


Thank you for downloading the Wattyl Colour range files for Sketchup.

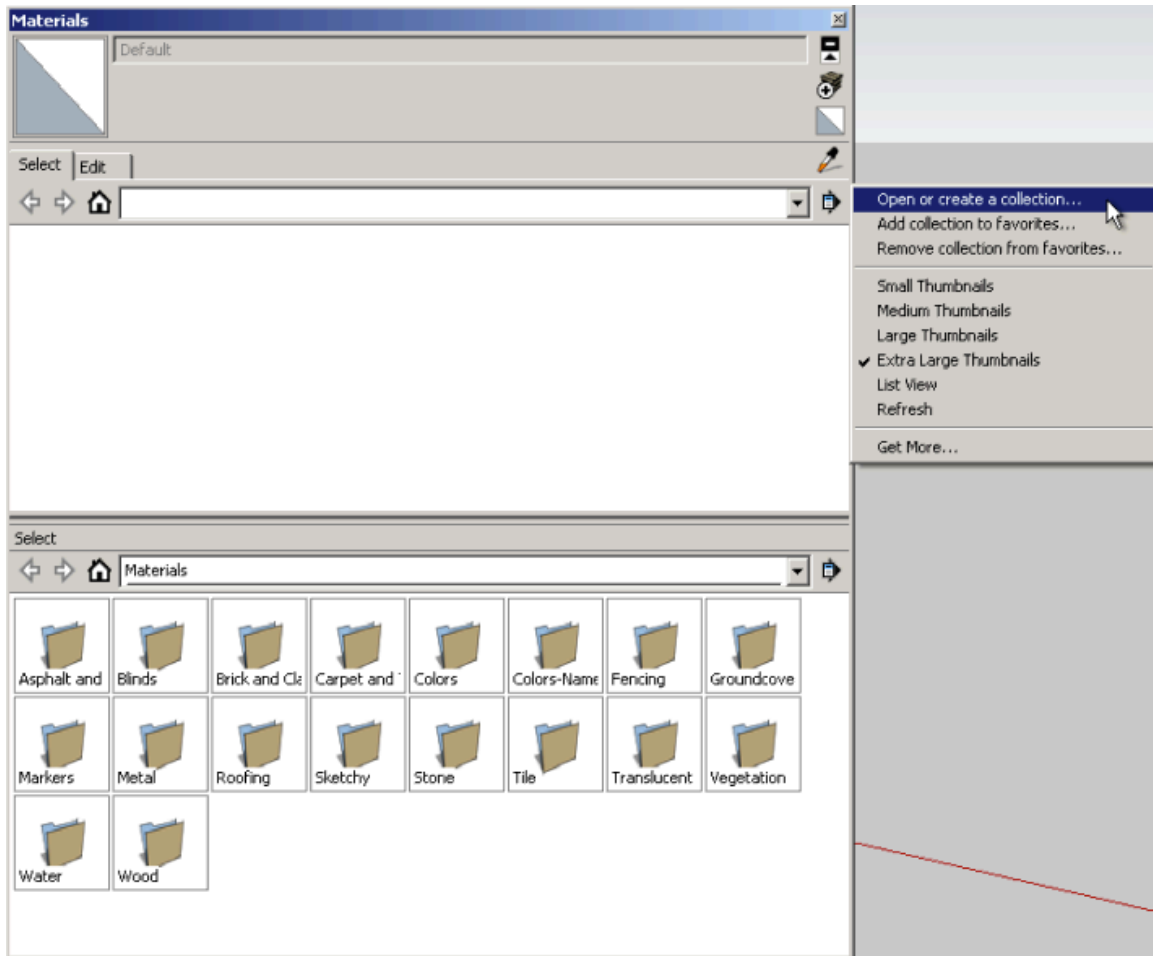
These allow you to quickly and easily use Wattyl's vast colour range in your Sketchup projects. You can quickly test different colour schemes & provide your clients with more realistic visualization's. Google sketchup is a free download from [sketchup.google.com](http://sketchup.google.com)

Adding Wattyl colours to your sketchup files is an easy process:

1. Open the Sketchup Materials browser. This is found under Window > Materials



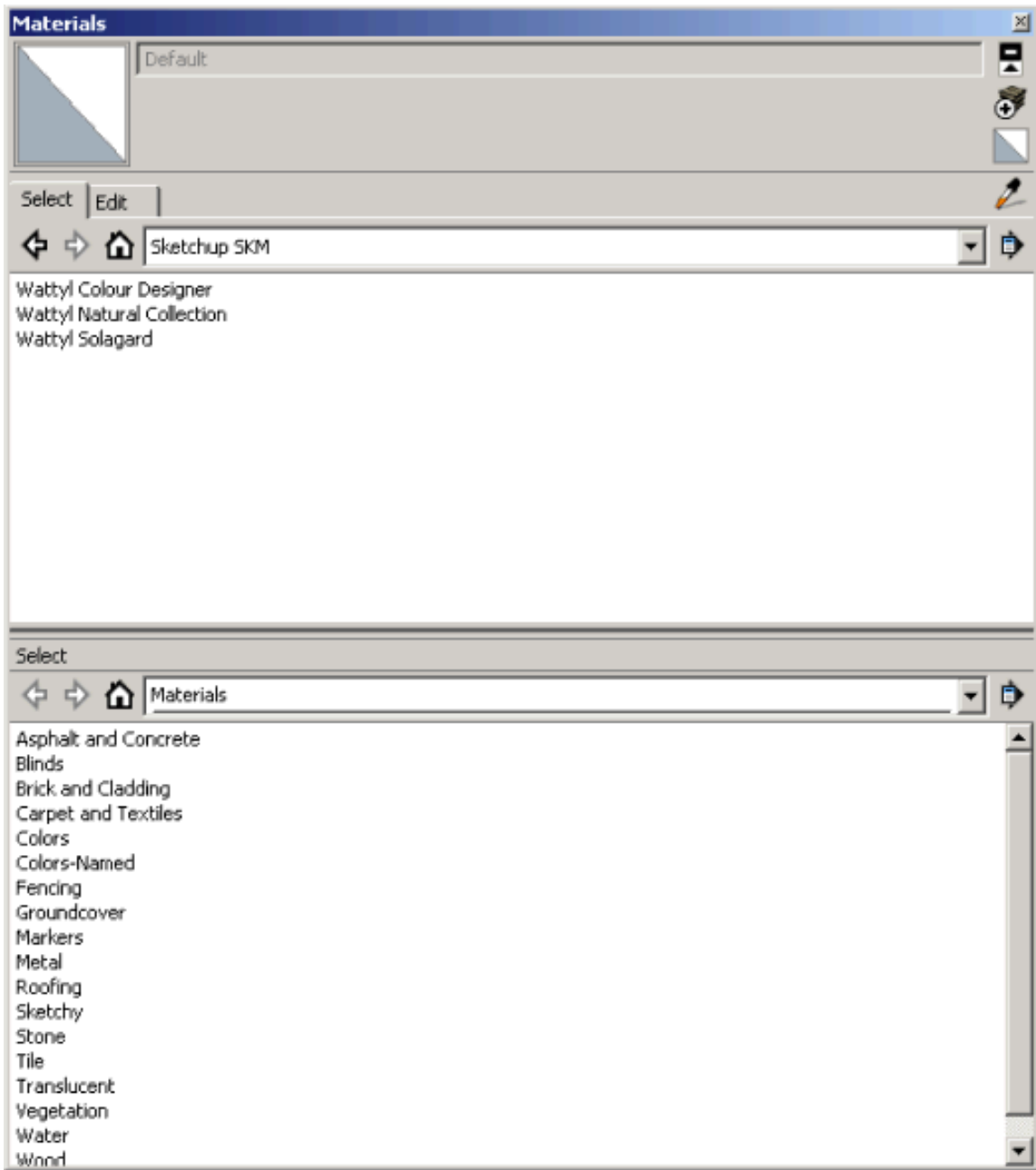
2. Press the arrow button, & select load/create a new collection.

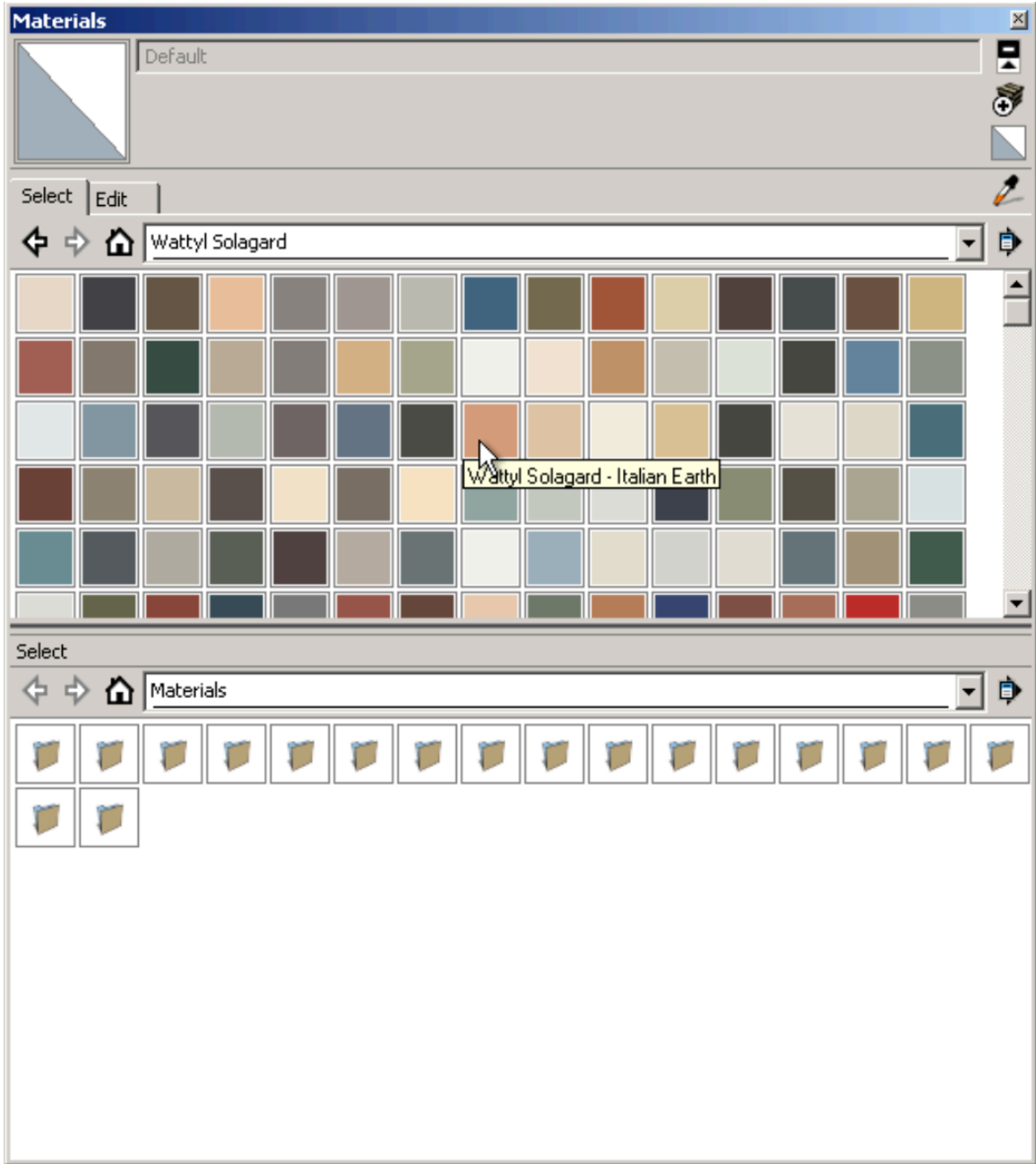


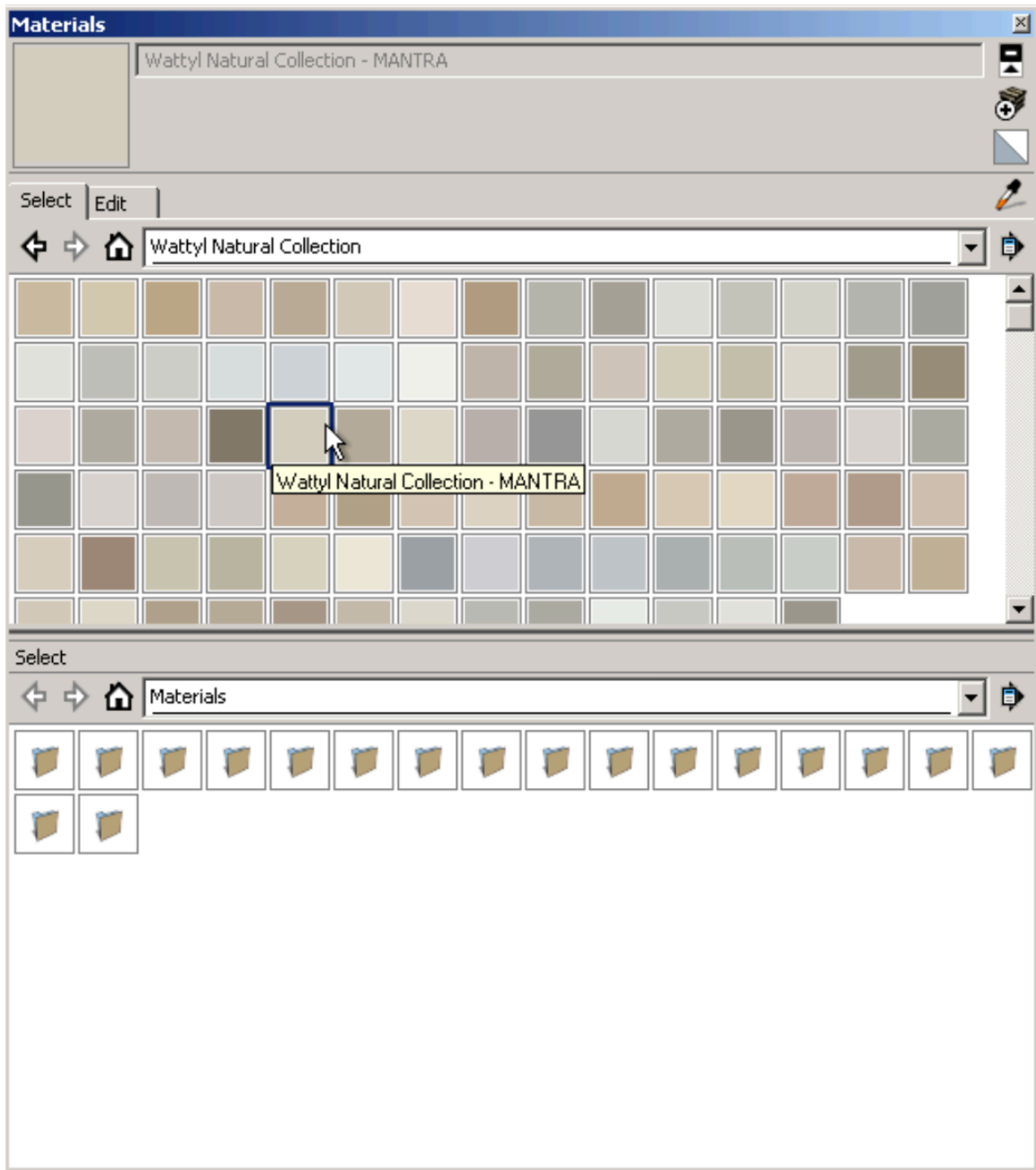
3. From there, browse to where you have downloaded the Watty Sketchup colour ranges.

4. Select which range's folder you would like to add and click open.

5.This will open the selected range and add it to the materials favourites menu.







From here you can apply the Wattyl colours to your Sketchup model. To load more Wattyl ranges simply download them, then follow steps 1 to 5 again.

For more help with Sketchup, please refer to Googles Sketchup's online help at <http://help.sketchup.com/en>