



BROUGHT TO YOU BY LEADING PAINT BRANDS



Thank you for downloading the Wattyl Colour range files for ArchiCAD.

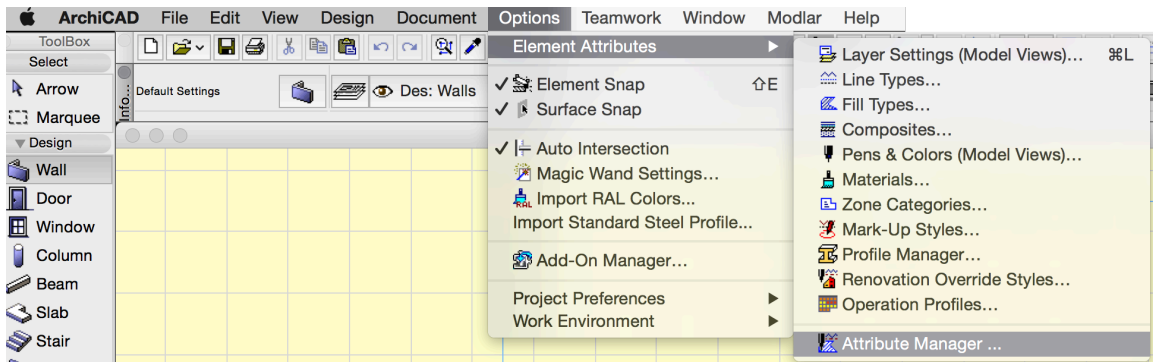
These allow you to quickly and easily use Wattyl's vast colour range in your ArchiCAD projects. You can quickly test different colour schemes & provide your clients with more realistic visualisations.

These colour files require ArchiCAD 9 or higher and work on both Macs & PCs.

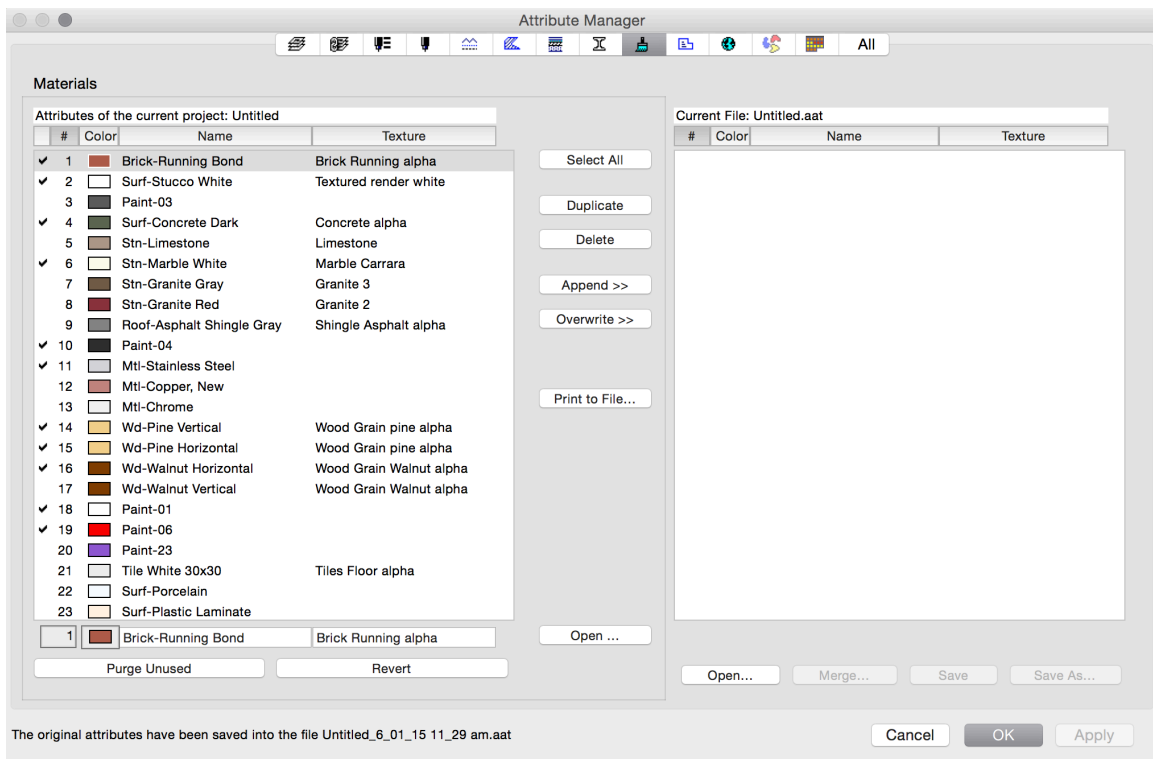
All of the colours have been made into ArchiCAD materials and have also been optimized for use with the Lightworks rendering engine.

Adding Wattyl colours to your project or template files is an easy process:

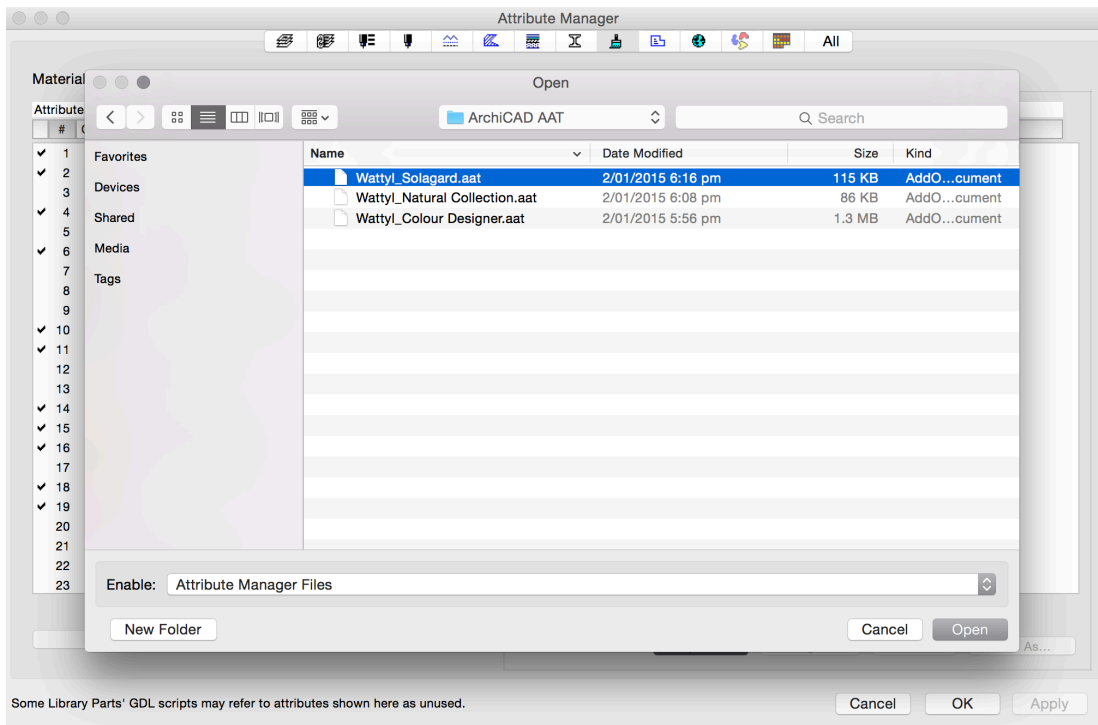
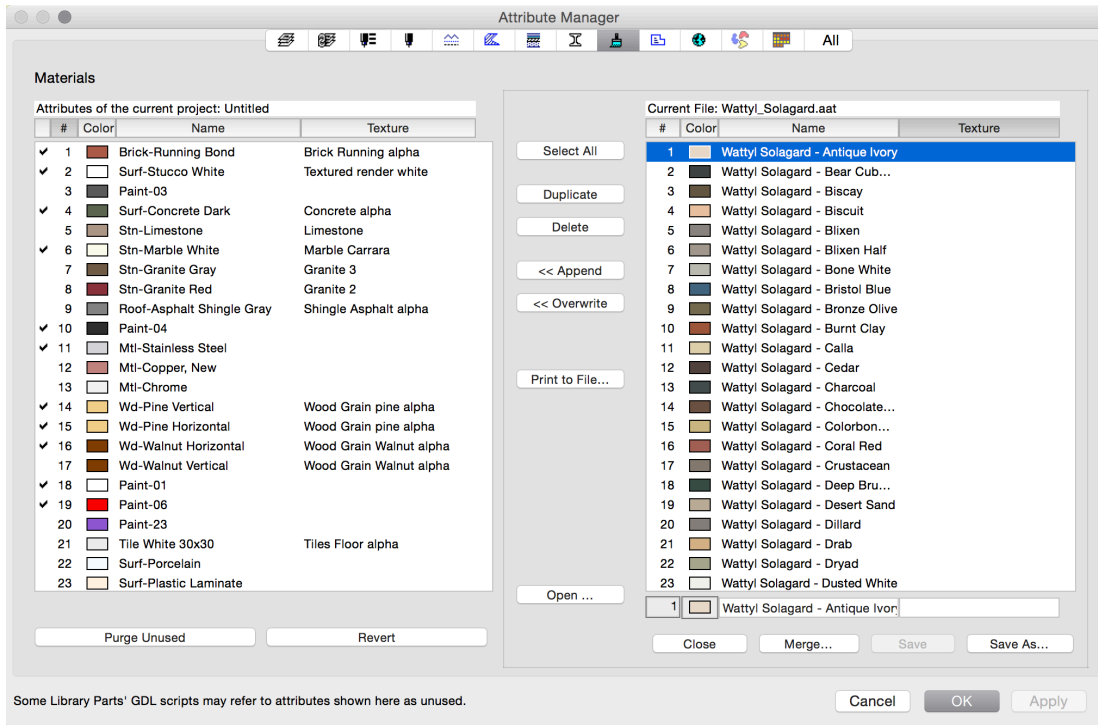
1. Opening the Attribute Manager within the your project and selected the materials tab.



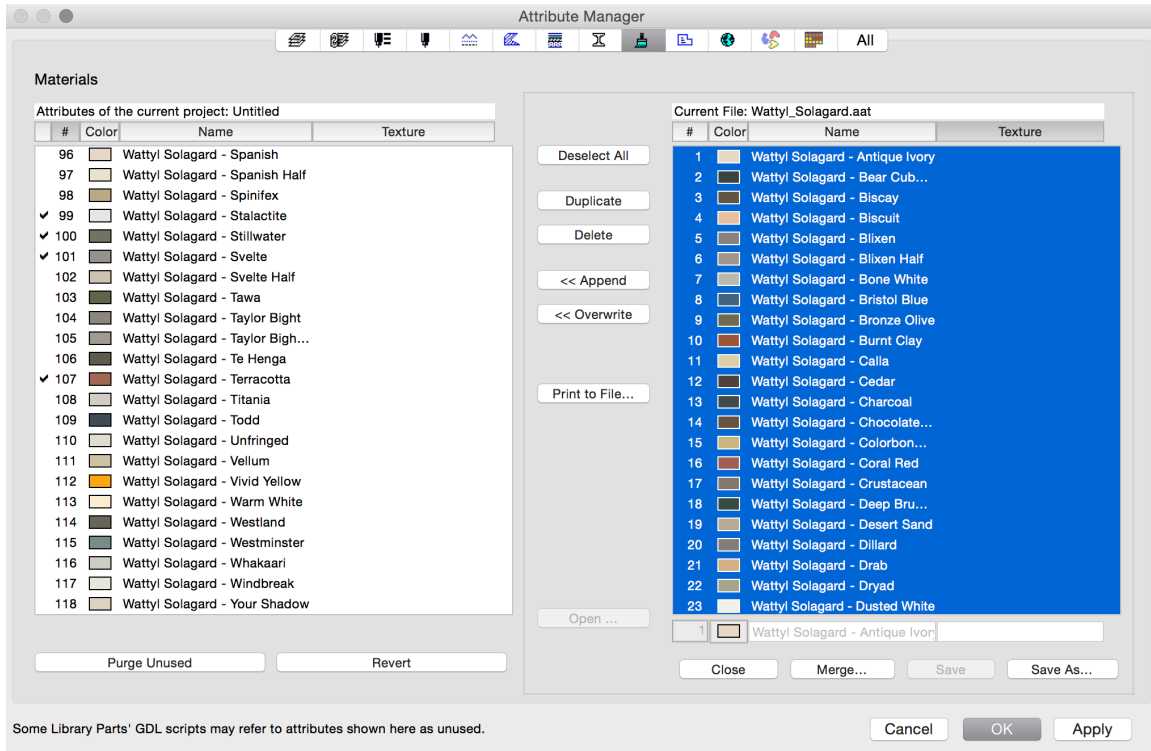
2. Attribute Manager will appear and prompt you to load the Material files into the project.



3. Press “open” and browse to the Wattyl colour file you would like to load. Press “open”



4. Select the colours you would like to add and press “Append” or “Overwrite”. Add as many colours as you like. You can also open other Watty! colour files, to load colours from different ranges. When you have finished adding the additional colours press “OK”



The Watty colours you selected will be loaded into your ArchiCAD project's materials menu and can now easily be applied to walls, slabs, roofs, objects etc. throughout your project. You can add more colours at anytime, by simply going back to your Attribute manager.

